

5. Seat Heater System

A: REMOVAL

1. SEAT HEATER UNIT

- 1) Remove the front seats. <Ref. to SE-9, REMOVAL, Front Seat.>
- 2) Remove the backrest cover of front seat and seat cushion cover. <Ref. to SE-11, DISASSEMBLY, Front Seat.>
- 3) Remove the seat heater unit.

2. SEAT HEATER SWITCH

- 1) Disconnect the ground cable from battery and wait for at least 60 seconds before starting work. <Ref. to NT-5, BATTERY, NOTE, Note.>

NOTE:

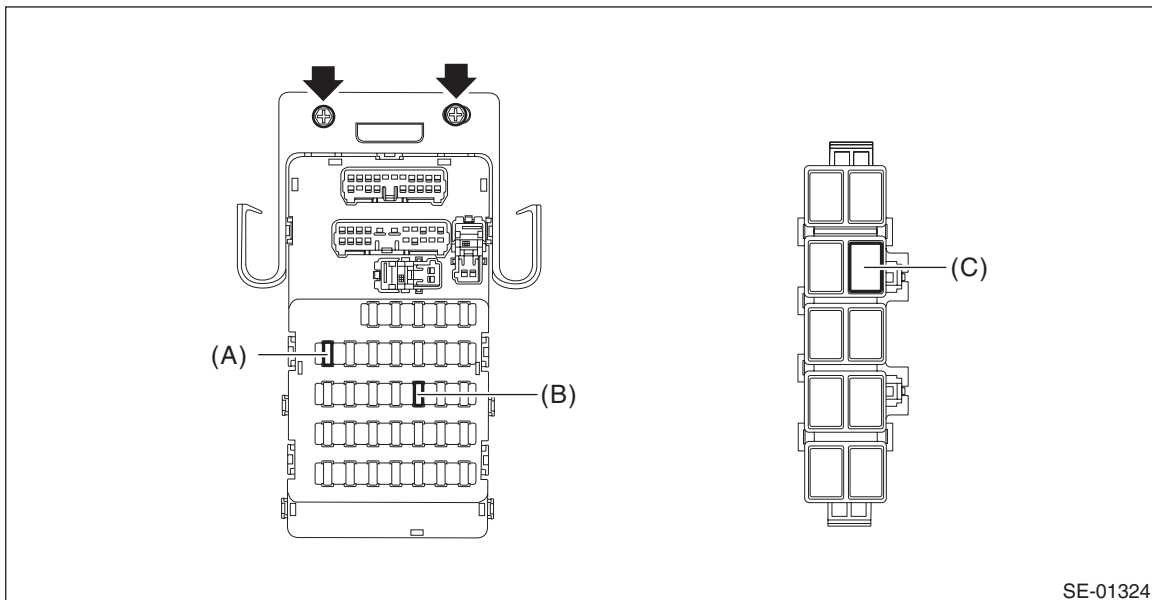
- For models other than STI model, disconnect the ground terminal from battery sensor.
 - On CVT models, shift the select lever into D before disconnecting the battery ground cable.
- 2) Remove the console box assembly. <Ref. to EI-67, REMOVAL, Console Box.>
 - 3) Remove the screws and remove the seat heater switch from the backside of the console box assembly.

3. SEAT HEATER RELAY AND FUSE

- 1) Disconnect the ground cable from battery and wait for at least 60 seconds before starting work. <Ref. to NT-5, BATTERY, NOTE, Note.>

NOTE:

- For models other than STI model, disconnect the ground terminal from battery sensor.
- 2) Remove the cover assembly - instrument panel LWR driver. <Ref. to EI-61, REMOVAL, Instrument Panel Lower Cover.>
 - 3) Remove the glove box assembly. <Ref. to EI-63, REMOVAL, Glove Box.>
 - 4) Remove the seat heater relay and fuse.
 - (1) Remove the relay & fuse box bolts.
 - (2) Remove the seat heater relay from the relay holder.



Relay & fuse box	Fuse 7.5 A (remote control mirror)	(A)
	Fuse 15 A (seat heater)	(B)
Relay holder	Seat heater relay	(C)

B: INSTALLATION

- 1) Install the seat heater relay & fuse.
- 2) Install the globe box assembly.
- 3) Install the cover assembly - instrument panel LWR driver.
- 4) Connect the battery ground terminal. <Ref. to NT-5, BATTERY, NOTE, Note.>

NOTE:

For models other than STI model, connect the ground terminal to battery sensor.

C: INSPECTION

1. WIRING DIAGRAM

Refer to “Seat Heater System” in the wiring diagram. <Ref. to WI-370, WIRING DIAGRAM, Seat Heater System.>

2. DIAGNOSTIC CHART

Symptoms	Repair order
Seat heater does not operate.	1. Check the fuse. <Ref. to SE-47, CHECK SEAT HEATER FUSE, INSPECTION, Seat Heater System.>
	2. Check the seat heater relay. <Ref. to SE-47, CHECK SEAT HEATER RELAY, INSPECTION, Seat Heater System.>
	3. Check the seat heater system power supply and ground circuit. <Ref. to SE-48, CHECK POWER SUPPLY AND GROUND CIRCUIT, INSPECTION, Seat Heater System.>
	4. Check the seat heater module. <Ref. to SE-48, SEAT HEATER UNIT, INSPECTION, Seat Heater System.>
	5. Check the seat heater switch circuit. <Ref. to SE-49, SEAT HEATER SWITCH, INSPECTION, Seat Heater System.>

3. CHECK SEAT HEATER FUSE

Remove the seat heater fuse and inspect visually.

Is the fuse blown out?

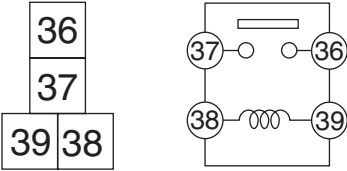
- **Yes** → Replace the fuse.
- **No** → Check the power supply and ground circuits.

4. CHECK SEAT HEATER RELAY

- 1) Remove the seat heater relay from the relay holder.
- 2) Measure the resistance between seat heater relay terminals.

Preparation tool:

Circuit tester

Terminal No.	Inspection conditions	Standard	Circuit
36 — 37	Always	1 MΩ or more	
36 — 37	Apply battery voltage between terminals 38 and 39.	Less than 1 Ω	

- 3) Replace the seat heater relay if the inspection result is not within the standard value.

5. CHECK POWER SUPPLY AND GROUND CIRCUIT

1) Check power supply circuit

- (1) Disconnect the harness connector of seat heater switch.
- (2) Turn the ignition switch to ON.
- (3) Measure the voltage between harness connector terminal and chassis ground.

Connector & terminal

(R43) No. 7 (+) — Chassis ground (-):

Is the voltage 12 V or more?

- **Yes** → Go to step 2.
- **No** → Check the harness between the seat heater switch and fuse.

2) Check ground circuit

Measure the resistance between harness connector terminal and chassis ground.

Connector & terminal

(R43) No. 2 — Chassis ground:

Is the resistance less than 10 Ω ?

- **Yes** → Go to step 3.
- **No** → Repair the harness.

3) Check ground circuit

Measure the resistance between seat heater switch terminals.

Connector & terminal

(R43) No. 7 — (R43) No. 2:

Is the resistance less than 10 Ω ?

- **Yes** → The power supply and ground circuits are normal.
- **No** → Replace the seat heater switch.

6. SEAT HEATER UNIT

1) Disconnect the seat heater unit connector, and check the continuity between terminals of connector.

Connector & terminal

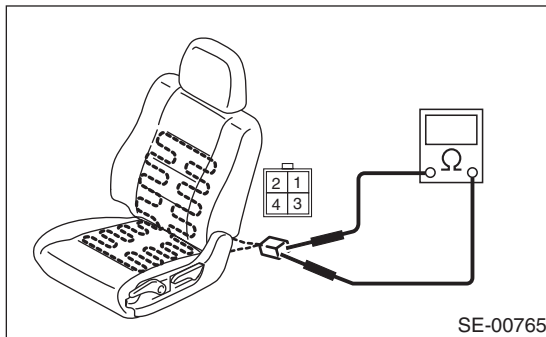
HI

No. 1 — No. 3:

No. 3 — No. 4:

LOW

No. 1 — No. 4:

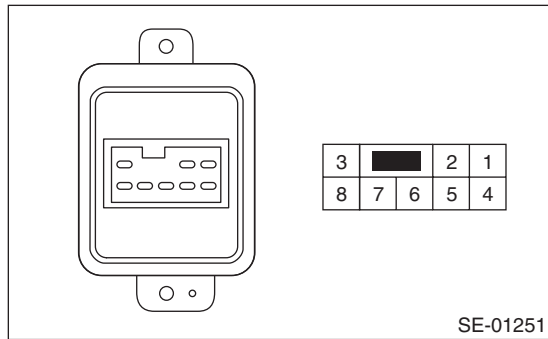


2) If no continuity exists, replace the seat heater module with a new part.

7. SEAT HEATER SWITCH

1) Inspect the continuity between the seat heater switch terminals.

- STI model



Connector & terminal

HI

No. 7 — No. 2:

No. 7 — No. 4:

No. 7 — No. 8:

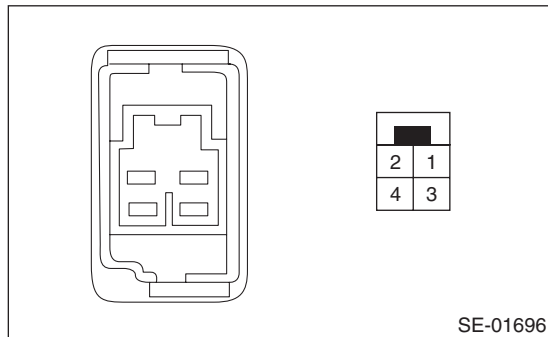
LOW

No. 7 — No. 1:

No. 7 — No. 2:

No. 7 — No. 3:

- Except for STI model



Connector & terminal

HI

No. 2 — No. 1:

No. 4 — No. 3:

LOW

No. 2 — No. 4:

2) If no continuity exists, replace the seat heater switch with a new part.

Seat Heater System

SEATS

SECURITY AND LOCKS

SL

	Page
1. General Description	2
2. Relay and Fuse	8
3. Door Lock Control System	10
4. Keyless Entry System	15
5. Keyless Access System	25
6. Push Button Start System	26
7. Security System	28
8. Front Inner Remote	32
9. Front Outer Handle	33
10. Front Door Latch and Door Lock Actuator Assembly	37
11. Rear Inner Remote	40
12. Rear Outer Handle	41
13. Rear Door Latch and Door Lock Actuator Assembly	45
14. Trunk Opener Switch	47
15. Trunk Lid Latch and Actuator Assembly	49
16. Front Hood Lock Assembly	51
17. Remote Openers	56
18. Ignition Key Lock	64
19. Key Lock Cylinders	66
20. Security Control Module	72
21. Impact Sensor	74
22. Keyless Entry Control Module	76
23. Keyless Buzzer	77
24. Body Integrated Unit	78
25. Keyless Transmitter	82
26. Access Key	85
27. Immobilizer Control Module	87
28. Immobilizer Antenna	88
29. Keyless Access Indoor Antenna	92
30. Keyless Access Outdoor Antenna	95
31. Trunk Opener Button	97
32. Receiver	98
33. Keyless Access CM	100
34. ID Code Box	103
35. Steering Lock CM	104
36. Push Button Ignition Switch	106
37. Starter Relay (Push Button Start)	108
38. IG Relay1 (Push Button Start)	110
39. IG Relay2 (Push Button Start)	112
40. Accessory Relay (Push Button Start)	114
41. Starter Cut Relay	116
42. Access Buzzer	118
43. Function Setting (Customize)	119
44. Keyless Access With Push Button Start System	120